



Member of the STEM PUSH Network, an NSF INCLUDES Alliance

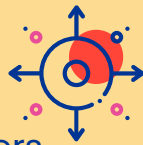
The CSU East Bay MESA College Prep Program supports students to develop their confidence, competence, and love of STEM by building a community that fosters curiosity and exploration.

Led by the Institute for STEM Education, CSU East Bay MESA assists East Bay middle and high school students, who have been historically excluded in STEM fields, to excel in math and science and go on to college in math-based majors.

All CSU East Bay MESA participants have direct connections to college students, staff, faculty, and industry professionals who help to build a college-going culture. MESA students develop a strong STEM-identity that supports them as they pursue degrees and develop plans for their future careers.

CSU East Bay MESA emphasizes & develops several targeted outcomes, including:

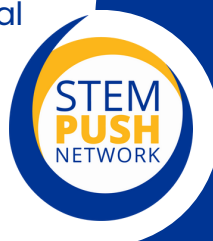
- Ability to work in a collaborative environment
- Specific STEM content and skills
- Growth mindset
- STEM identity & sense of belonging
- Awareness of STEM opportunities & careers



Students demonstrate these skills through designing, building, and testing projects for competitions, presenting, PDs, and leadership meetings.

About the STEM PUSH Network

STEM PUSH, an NSF INCLUDES Alliance, is a national network of pre-college STEM programs who are engaging youth historically underrepresented in STEM to learn & do in-depth, authentic science, and ultimately to persist in STEM through college & beyond. More information available at stempushnetwork.org.



Program Features

Math, Science & Engineering

STEM Focus

150 hours/year

September through May

>600 students served each year

Free for students to attend

80% of students are **underrepresented in STEM**

Student voice centered

in program design: students learn crucial skills including collaboration, written & oral communication, leadership, and perseverance

Program Results

97% of alum attend college

72% of graduating seniors pursue STEM degrees at 4-year institutions

Alumni have attended institutions including:

- Cal Poly San Luis Obispo
- Howard University
- Purdue University
- UC Berkeley
- UC Davis
- UC Irvine
- UC Los Angeles
- UC San Diego
- UC Santa Cruz
- Stanford University



MESA University

recently launched to support Computer Science and Computer Engineering transfer students at CSU East Bay

Panels with alumni

are held throughout the year to share college experiences with current participants

Community partners

include scientists, researchers & industry professionals from:

- Institute for STEM Education
- 3 National Labs
- Port of Oakland
- CSU East Bay
- Other local STEM organizations

CSU East Bay MESA

The MESA program was founded in 1970 with the explicit goal of supporting students who have been historically excluded from attaining degrees in STEM fields. CSU East Bay MESA connects middle and high school students to college students, faculty, and professionals to demonstrate the diversity of STEM fields and support development of STEM identity and STEM community.

Chapters meet at their own schools in the East Bay Area while CSU East Bay coordinates programming and hosts events on the university campus in Hayward, California.

CSU East Bay's MESA College Prep Program builds a community for diverse individuals interested in STEM to learn and explore in culturally sustaining ways. Middle and high school students spend the academic year focusing on STEM-related projects where they research, develop, prototype, iterate, and ultimately compete. Throughout the year, students work closely with credentialed teachers and connect to college students, faculty, and professionals to explore the diversity of STEM disciplines and those who work in those fields.



My favorite part of the MESA College Prep Program was meeting other people who were passionate about STEM in the way that I was and being able to connect and bond over it. This program was able to help me foster my love for STEM and gain a deeper understanding about my passion for STEM in general.

– 2020 CSU East Bay MESA Alumna



CSU East Bay MESA directly connects students and credentialed teachers from five local school districts to college students, faculty, and professionals. CSU East Bay MESA provides more than 25 hours of professional development for the credentialed teachers who serve as MESA Advisors.

Connect with CSU East Bay's College Prep Program!

Contact Janiene M. Langford, MESA Director, at janiene.langford@csueastbay.edu to schedule a visit.

Visit sites.google.com/csueastbay.edu/csueastbay-mesa-college-prep for more information.